

VOLUME 60

September 2021

ISSUE 89

### CLUB OFFICERS

President ..... Martha Colquhoun  
 Vice President ..... Kevin Nelson  
 Secretary ..... Tina Chircop  
 Treasurer ..... Carol Hansen

### BOARD OF DIRECTORS

Keith Collins ..... Wally Nicolau, Sr.  
 Sharon Ott ..... Dan Sciabica  
 Stratt Riggs ..... Linda Weaver

**Send Vibrator Correspondence by  
 the 23<sup>rd</sup> of the month to:**



Faye Hill  
 P. O. Box 1221  
 Patterson, CA 95363  
 (209) 892-6533  
 e-mail: fhhd@gvni.com



### COMMITTEES

Club House Cleanup . . Thorl and Rosemay Kenner  
 Club Merchandise ..... Kevin Nelson  
 Coalition of Calif. Car Clubs ..... John Carvalho  
 Fashions. .... Teresa Gissible  
 Good Guy Award ..... John Carvalho  
 Hard Luck ..... Wally Nicolau  
 Historian ..... Stan Braden  
 Hubley Cars. .... Joe and Debbie Gonsalves  
 John and Dolly Terra  
 MAFCA and NCRG ..... Bob and Sharon Ott  
 MAFFI and 50/50 Drawing. .... Stan Braden  
 Mileage and Attendance ..... Janis Martin  
 Name Badge Drawing/Raffle ..... Vada Terpstra  
 Christmas Raffle ..... John and Nancy Carvalho  
 Outstanding Member. ....  
 Photographer ..... Jim and Marci Schellman  
 Publicity ..... Barbara Collins  
 Refreshments. .... Steve and Brenda Smith  
 Roster ..... Linda Mahnke  
 Truck and Property Custodian. .... John Terpstra  
 Scholarship ..... John and Nancy Pimentel  
 Scrapbook ..... Marci Schellman  
 Sunshine ..... Jo Ann Bledsoe  
 Swap Meet Chairmen ..... Wally Nicolau,  
 Strat Riggs, and Al Colquhoun  
 Swap Meet Registration .... Tim and Jenny Nicolau  
 Swap Meet Treasurer ..... Donna Nicolau  
 Technical Director & Safety ..... Keith Collins  
 Tours ..... John and Mary Anne Nixon  
 Vibrator Editor ..... Faye Hill  
 Website ..... Faye Hill

## President's Message



Hi there Model A'ers..

Here we are well past the halfway mark for 2021 and about halfway through the "HOT" summer season. Most of us farmers are tending to our year end harvest obligations, and the rest of us are just trying to keep it between the lines. Good luck on that one!

We need to get some activity going in this club. Please, if you have any interest in Modesto Area Model A's Club, let's hear from you!! It seems as though when the club stopped paying, we stopped doing. Our Model A's have more built up cobwebs than road dirt. Lets get that reversed.

Please try to attend our September 10th meeting, as there are several things to discuss.





FYI, the Christmas Party will be held Sunday, December 12th. This will be our "Main Event" for the year. Hopefully we will have a good sized gathering.

Safe and uneventful travels to all who are going to Model A Days in Michigan.

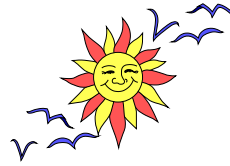
Remember our shut in with calls or cards.

Keep Rolling,

*Martha*

Sunday	Monday	Tuesday	Wednesday	Thursday	Friday	Saturday
<div> <div>2021</div> <div>  September </div> <div>2021</div> </div>						
			1	2	3	4
5	6  Board Meeting  <b>Labor Day</b>	7	8	9	10  Regular Meeting 7:00	11  
12	13	14	15	16	17   Constitution Day	18
19	20	21	22  	23	24	25
26	27	28	29	30		

# Club News and Information



## Sunshine

by  
Jo Ann Bledsoe

Hello from the Sunshine Corner. Hope this finds everyone well and happy.

If you wish to call Thoralf Kenner, use the number in the Roster 847-2706. Thoralf was in the Sonora hospital for 3 days because his blood count was over 600. They were camping at Frazier Flat. When they got back home, Rosemary was having problems keeping her food down and ended up at Doctor's Hospital for 2 days. They are both fine now.

Your Sunshine report is only as good as the members who help report the information to your Sunshine person. Please help to keep us all up to date on the health and welfare of our fellow members. Thank you

September 1	Paul Gissible
September 6	Kirk Gustafson
September 6	Mark Hill
September 7	Janis Martin
September 11	Merle Bledsoe
September 13	Wally Nicolau
September 17	Ebbie deWilms
September 19	Vada Terpstra
September 27	Jack Martin
September 30	Molly Cooper



September 3	Leroy & Betty Stanton
September 10	John and Mary Ann Nixon
September 12	Fred and Kathy Dick
September 13	Kirk & Jill Gustafson
September 18	Chuck & Linda Mahnke
September 21	Dan & Jean Sutherby
September 29	Paul & Ronna Lubker

### Roster Changes

Bob and Sharon Ott no longer have a land line.

Bob's cell: (209) 495-8176

Sharon's cell: (209) 605-6533

### Restorer Magazines

Bob and Sharon have *Restorer* Magazines 1992-2021 if anyone is interested in having them. Please call the numbers above.

## Ladies Tour October 9

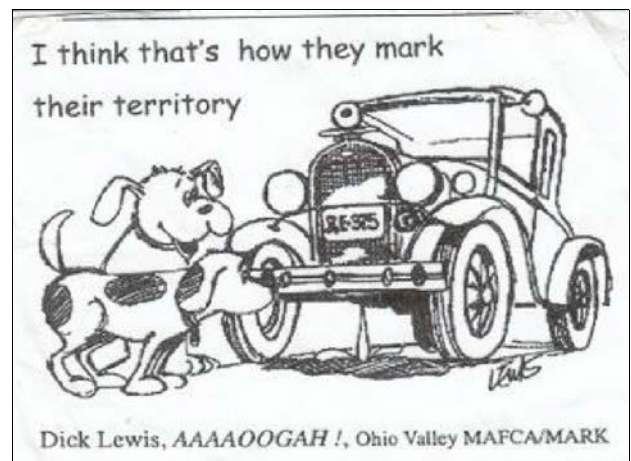
We will be meeting at Home Decor and more at 502 McHenry Avenue, Modesto (corner of Morris Ave) at 9:30.

After enjoying the store, we will head to Waterford for a fun and delicious luncheon. After which we will tour the upstairs Museum. They have added more to it since the time we were there a few years ago.

You won't want to miss signing up. We have room for 30 ladies. Make a check out for \$15.00 to Modesto Area A's to hold your spot.

Deadline for signing up is September 24.

Thanks Marci



# TECH SEMINAR

DATE: **SAT. NOV 13, 2021**

TIME: BEGIN AT 9:00AM Come early (have a donut)

PLACE: BRADEN'S "A" SERVICE CENTER 10548 John Fox Rd., Hughson, CA

PAYMENT: \$10 **MAKE PAYABLE TO KEITH COLLINS** 76 LINDEN AVE. GUSTINE, CA 95322

DEADLINE: NOVEMBER 5<sup>TH</sup> PAYMENT MUST BE RECEIVED BY NOV 5<sup>TH</sup>

LUNCH: **FAMOUS JOE'S TRI TIP**

SPEAKER: TERRY BURTZ

THE ENGINEERING AND DEVELOPMENT OF THE  
(NEW) MODEL "A" ENGINE.

CONTACT INFO.: KEITH COLLINS 209-803-1064

PAYMENT DEADLINE = NOV.5<sup>TH</sup>



## Era Fashion News . . . From Teresa Gissible

I'm hoping all the hot days are behind us, and fall is on its way. This month I thought I'd share an article to help you identifying jewelry designer in the Model A Era.

Jewelry designers of the time and the unique methods of construction and materials employed in the designer's "signatures". As you shop, train your eyes to recognize the styles and designs of certain makers. A 10x loupe magnification or jeweler's loupe.

Inspect the piece all over for signs of damage, missing stones, flat or discolored stones and chipped enamel. Check to see if the piece is signed or not. Costume jewelry is not always marked.

Many unsigned pieces are extravagant, beautiful, rare, and valuable. Elsa Schiaparelli did not sign her work before 1930. Miriam Haskell, Chanel, and Elsa Schiaparelli set trends for the rest of the fashion world to follow.

### Elsa Schiaparelli: 1890-1973



Elsa Schiaparelli founded a fashion house in Paris in the early 1920s and drove Costume Jewelry to the cutting edge of fashion.

- When identifying Costume Jewelry by Schiaparelli look for Costume Jewelry which is quirky, surrealist-inspired, highly stylized designs.
- Many of Elsa's design was inspired by the milky way, planets, and celestial lights. Her uncle was the famous Italian astronomer Giovanni Schiaparelli who discovered the canals of Mars.
- From the 1950s she was based in New York and made abstract or floral jewelry designs using colorful stones and glass.
- Her signature color was "shocking pink" at a time when Coco Chanel's little black dress was still de rigueur.
- Early pieces are usually unsigned; later pieces are signed.
- Many fakes have been produced.

### Christian Dior: 1905-57



Christian Dior's "New Look" transformed fashion after World War II. Jewelry was an integral part of his collections.

- Early pieces were made in small numbers for particular outfits or clients.
- Later pieces made under license in greater numbers with unusual pastes and stones.
- Most pieces are signed and dated.
- The quality of stones and settings are always striking.



## Mazer Brothers: 1927-81



Joseph and Louis Mazer, from late 1927 in New York City, made affordable, simulations of expensive jewelry. In 1946, Joseph set up his own company, marking his work "Jomaz."

- When identifying Costume Jewelry by Mazer, have in mind that early pieces were designed by **Marcel Boucher** before he established his own company in 1934.
- Popular designs included, floral, foliate, ribbon-and-bow-motif accented with fine "Sea-Maze" faux pearls or the best [Austrian rhinestones](#).
- Stones are in sophisticated cuts and settings.
- Pieces remain relatively affordable, according to Judith Miller, Collector's Guides, Costume Jewelry, 2003.



The company was founded in New York by the son of a Parisian goldsmith.

- Materials included vermeil (gold plated silver), platinum, pastes and semi-precious stones.
- Exotic designs and reproductions of historic pieces owned by European royalty.

## Miriam Haskell: 1899-1981



Need a Miriam Haskell Jewelry Appraisal? Click [Here...](#)

Miriam Haskell helped to make costume jewelry as prestigious and even more fashionable (according to some people) than fine Antique Jewelry. Celebrities, as well as ordinary people from all walks of life, have sought Miriam Haskell Costume Jewelry to treasure and wear.

- When identifying Costume Jewelry by Haskell, components will include fake pearls and roses montees (flat-backed rhinestones in clusters).
- Pearls are attached to a gilt metal chain.
- Innovative and complex hand-wired pieces created by a team of designers.
- Missing rhinestones and damaged pearls will substantially detract from the value of fine costume jewelry by Miriam Haskell.



### Stanley Hagler: 1923-96

Stanley Hagler clients were the elite from all over the world. He was in business from the 1950s to 1996. Famed for her legendary jewelry collection, [Wallace Simpson, Duchess of Windsor](#), enjoyed wearing fine costume and faux pieces.

Hagler's first piece, a gold plated bracelet made in the 1950s was designed for the woman whose husband, King Edward viii, of the British Royal family, famously gave up the British throne for her.

From his earliest creations for the Duchess of Windsor, his jewelry combined contemporary design with antique parts. He used the finest materials, handblown glass, [Swarovski crystals](#) and Russian gold plated filigree. His pieces look equally good from the back. Mr Hagler won the prestigious Swarovski Design Award 11 times! He also created outstanding [Costume Jewelry Christmas Tree Pins](#).



### Trifari: 1918-present

Trifari has long been one of the United States most important costume jewelry makers. Trifari was born in Naples in 1883 and arrived in New York in 1904.

Part of Trifari's enduring success has been built upon the glamorous clientele and prestigious publicity. More recently, Madonna wore Trifari in the Hollywood movie, *Evita*. All Trifari pieces are collectible but among the most collectible are the Jelly Belly figural pins and Crown pins (especially those designed by Alfred Philippe during the 1940s).



### Maison Grippoix: 1870-present

#### Eisenberg:



For three generations, The Grippoix family has made poured glass jewelry under its name and for fashion houses, [Chanel - Costume Jewelry](#) and Dior since the mid-1920s.

- The company's skill with the poured glass technique means it can create both subtle and vibrant colors with varying degrees of translucency and opacity.
- When identifying Costume Jewelry by Chanel from the early 1990s





## GROUNDS

This tip comes from Randy Rundle—Fifth Avenue Antique Auto Parts. Good tip for, not only your Model A, but all cars.

You know by now that the ground path back to the battery is just as important as the current path from the battery to the accessory. The ground path back to the battery typically travels thru the frame which is likely painted, rusty, greasy, or any combination thereof. Any of the above named...which are not good conductors of electricity, will restrict the flow of current back to the battery.

Then there are the built-in obstacles like rubber engine mounts, rubber body mounts, and the engine accessories bolted to a painted or rusty engine block all of which can cause high resistance otherwise known as high electrical friction within the electrical circuits, as the current tries to find an electrical path back to the battery.

So why does this matter? Electricity is lazy and will find and follow the easiest path back to the battery. That path might include thru the cooling system which can damage parts inside of your transmission, especially automatics, so if you are having repeated transmission failures of small internal parts check for voltage present in your coolant which is a sign of a poor ground path back to the battery.

Not being selective, the return ground path back to the battery might include things like throttle return springs and the like, which is pretty scary when you think about it. Open up the hood some evening after dark and with the engine running look for glowing red/orange throttle return springs and arcing between plug wires and engine block, or any stray voltage. You should NOT see any open voltage anywhere.

If you have an overdrive/with electric solenoid...the ground is especially important. Ideally the overdrive transmission will be grounded as it is bolted to the engine block which you assume is also grounded to the frame. But remember there are also rubber motor mounts and rubber transmission mounts and the majority of your overdrive transmission is electrical. So if things are not working, the first place to start is the ground. It's simple and won't cost you much.

I had a customer recently experience this very situation where his overdrive would only work intermittently. He tried everything to fix it, even swapping around his spare overdrive solenoid and relay along with his kick down switch and nothing seemed to make any difference. I told him to add a ground strap to his transmission and ground it to the frame making sure he had a clean metal to metal connection. Bingo his overdrive now works like it is brand new and shifts better than it ever has. His problem was a lack of ground.

Having the return ground path travel back thru the cooling system is also not a good plan especially if you have aluminum cylinder heads. The electrolysis created as the current travels thru the aluminum heads can destroy the aluminum heads within a short period of time. Now that I have your attention you will want to know how to check your cooling system for electrolysis.

#### HOW TO CHECK FOR ELECTRICAL CURRENT INSIDE OF THE COOLING SYSTEM

First, remove the radiator cap carefully when the engine is warm (thermostat open) and engine idling. You want to set your voltmeter to the zero to ten scale. Insert the red lead of the voltmeter into the engine coolant making sure to NOT touch the metal of the radiator. Ground the black lead to a good ground location.

You want to check the liquid coolant only. If you have a reading greater than 0.10 you have electrical current flowing thru the cooling system. One of the worst cases I saw was a reading of 0.90 which means there was more than one source of battery ground not getting back to the battery.

Once you identify your reading you need to find the source of the stray ground. Typically it will be from an added on accessory like an engine cooling fan, or accessory spotlight, or fog lamps and not a factory-installed accessory.

Your job is to turn on each of the accessories one at a time till you find the one that makes the reading drop. If your reading is high there is likely more than one accessory that is at fault. The fix is to make sure there is a clear and direct path back to the battery. A remote Battery Stud works ideal in this situation. You can ground more than one accessory directly back to the battery to insure everything works as it is supposed to.

## AND THE STARTER...

This ground thing happens in starter circuits also which is why I tell you to use one gauge cables on both 6 and 12-volts applications and to always ground the starter at a starter mounting bolt and not to the frame or engine block as even the factory did. You can lose up to 40 percent of your cranking power from a poor ground in the starting circuit.

Always remember this... All batteries are at least 650 cranking amps and your starter should only need 150 amps to crank over the engine, so if the engine cranks slowly or not at all that tells you the 650 amps stored in the battery is not getting delivered to the starter...and what has that job...THE BATTERY CABLES...and where is the ground cable connected and how far away from the starter is that? You want to have a DIRECT path between the starter and the battery! If you do that your antique vehicle will start even on 6-volts like a modern 12-volt.

So in summary you need to look carefully at the ground path back to the battery of all your accessories. Once you establish a good ground path all of your accessories will work better. You can be proud you fixed your grounds with such little effort on your part. Once you get things all fixed share your knowledge with your friends who no doubt struggled like you did before you got educated.



## News of the Past

### 50 Year Ago - September 10, 1971

Pres. Jim Bergamaschi called the meeting together.

Dick Braden announced the coming beach tour would leave from Ceres. Joe Boyko told about the Hardin Flat picnic and Joe Stewart reported on the ice skating party. Bud said the dress up party would be held at the Twain Harte Lodge.

Hank reported that the club truck was ready to be sand blasted. He plans to paint right after the sand blasting. Some parts need too be taken home for completion.

Marshal reported the price for the fair grounds for two days would be \$300 for the Swap meet which includes utilities, cafeteria building and regional group meeting.

Judges and Jr. Judges were announced as follows: Dorothy Curry, judge; Veda Lewis and Opal Hattendorff, jr. judges. Opal Hattendorff, Sec./Treas

### 25 Years Ago - September 13, 1996

President Ron Crum called the meeting to order. Guests present were Mel Sailey; Crum's granddaughter, Shawnda and Barber's granddaughters Kristen and Megan.

Frank Herger announced that Dan Dark was the recipient of the Hard Luck Trophy.

Jim DeWilms announced the logo for the National meet will be "Reno Date in 98". The committee has set aside a time for Ann Curtis to do another fashion show. Our club will be in charge of selling shirts, dash plaques and merchandise. We are to start selling T-shirts in January of 1997.

Bob Scott presented George and Shirley Mattos with their 15,000 and 20,000 mileage pins.

Weldon Smith reported the fairgrounds will close off track betting on Saturday during our meet. Dan Dark will post a work sign-up sheet and if people want to change jobs they can.

Gwen Barber reported on the up coming camp out at Casa de Fruita.

Donna Crum reminded members to make hotel reservations for the President's Party.

Burta Herger reported a tour to the Ironstone Winery in Murphys to watch a Civil War enactment in November.

Linda Farrow announced the nominating committee nominated the following to run for office: president, Ernie Oletta; vice president, Linda Weaver; secretary, Vicky Morrison; treasurer, Carol Lyons; board of directors, Roland Barber, Ebbie DeWilms, Bob Scott and Dave Lyons for two positions.

The "Sponsored Membership Bylaw Amendment" was voted upon and passed 50 to 16.

Ron Crum reminded everyone that they are invited to the Webb's for an open house for Marshall and Ellen Lewis.

The Board recommended a bylaw change so that exceptions could be made excusing anyone from working the Swap Meet who had a valid reason. It will be printed in the "Vibrator" before voting.

A raffle was held with the following winners: Jim DeWilms, Joe Curry, Dave Lyons, Erman Webb, Jack Noxon, Dana Trimble, Mel Sailey, Mary Jane Vaughn, Liese Ott, Weldon Smith, Lauren Campbell, and Alex Levintini. Name badge prizes went to Shirley Mattos, Keith Collins, Jack Noxon, Linda Mahnke, Alex Leventini, Brant Scott, Liese Ott and Gwen Barber.

Linda Weaver, Secretary

### 15 Years Ago - September 8, 2006

Pres. Jack Adams called the meeting to order at 7:30 p.m. at the Empire Community Hall. Brooks Rushing introduced Ted & Mary DeKasha.

Jack announced the cut off date for the Grand Island Tour. Pat Oletta thanked Keith & Barbara Collins for the Westside Tour. Jack & Janis Martin will do an overnight tour to Mariposa and lead homeward through Yosemite for those interested.

Roland Barber reported Stan Braden's radiator hose blew up but the Hard Luck Trophy went to Art Lucero for his Westside Tour problems.

A Hubley Derby will be held at Crum's Ranch. Linda Mahnke is looking for White Elephant gifts for the Hubley Derby.

Jack Adams appointed Ernie & Pat Oletta and Jack Noxon to serve on the nominating committee.

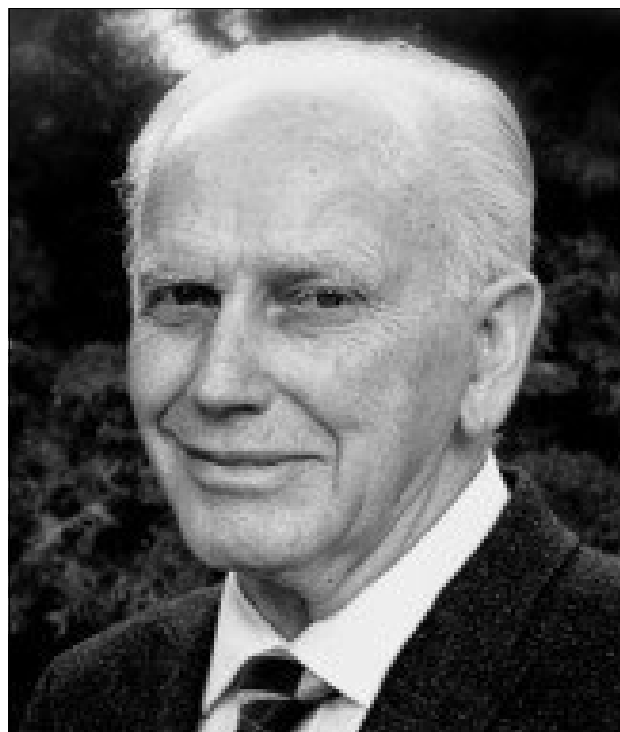
Raffle winners: Harry Webber - vise, Dave Hansen - era picture, Joan Doll - compact, Shirley Mattos - glass purse, Cliff Glidden - picture, Debbie Gonsalves - biscuit jar, Ebbie DeWilms - Model A pin, Patty Echert - dress clip, Mary DeKasha - picture, Thorai Kenner - cookie jar & cookies, Jack Hanney - bud vase, Jim Patrick - *Henry's A Book* & purse necklace, Bill Wiklinson, battery charger, Gail Waters - socket set, Brooks Rushing - flags, Burta Herger - note paper, Jack Noxon - picture. Name Badge Thorai Kenner - note Cards

Meeting adjourned at 8:32 p.m.

Gail Waters, Sec.



# **In Memory Of**



**Dr. Paul Curtis**

February 11, 1936 - July 27, 2021

Paul and Ann Curtis joined the Modesto Area A's in 1978

## MAFFI Newsletter Minute

August 2021

The Board of Trustees at MAFFI are more than excited about this year's Model A Day, September 18th. We think that it will be the biggest and best yet! There will be a Swap Meet, rides around the museum in several different vehicles, a jazz band, seminars, special guest, Wayne Carini of Chasing Classic Cars and of course our beautiful museum with our first Responder Display.

The seminars will be:

1st Responder Vehicles	Stan Johnson	Friday	6-7 pm	4 Points Sheraton
931 Bus History	Ken & Ron Ehrenhofer	Saturday	9:30 am-10:30 am	U-2 Bldg
Front End Rebuild	Larry Shepherd	Saturday	10:30 am-12 noon	U-2 Bldg
Fashion Seminar	Sherry	Saturday	0:30 am-12 noon	Theatre
MAFFI Annual Meeting		Saturday	1:00 pm-1:45 pm	Tent
Wayne Carini		Saturday	2:00 pm-3:15 pm	Tent
Woody Wagon	Rob Gibby	Saturday	3:30pm-4:15pm	U-2 Bldg

As always, these are subject to change without advanced notice.

We hope that you will stop and say hello to any of the MAFFI Board Members that you see. We will be the ones in the Yellow Vests wearing a smile!

If you aren't able to make it for Model A Day, remember that the Gilmore Museum complex is open 7 days a week. You are welcome ANY time!

Marsha Quesnel, MAFFI Trustee



WHITEHOUSE A'S MARC  
306 Ridgpoint Cir  
Waterville, OH 43566-1604

Attention Club Members,

## **JULY - NEWS RELEASE**

### ***THE BLIRTZ 5-MAIN MODEL A BLOCK Kit will soon be available...***

*The Burtz Block kit was recently on display at the National**MARC** Convention held in Oshkosh, WI and is featured in the April 2021 issue of **Secrets Magazine**.*

*The engine kit consists of the new 5-main block with dynamically balanced crankshaft and forged connecting rods. A copy of the article is attached. It provides a more detailed overview of the block and the modern engineering features that have been incorporated into the new design.*

*The kit is being offered to club members at a discounted price of 53,750.00 (plus shipping and taxes) with a minimum order quantity of 5 block kits to be shipped to a single club destination. This is a 5200 discount off the regular price.*

*To set up your pre-order, please email us at: [sales@alliedclassic.com](mailto:sales@alliedclassic.com) or call (540) 739-7577 and say "club order".*

*No payment or deposit is needed to pre-order your block. Billing will occur when blocks are ready to ship and you can cancel your pre-order at any time at no cost.*

*For more information about the block kit and availability, please visit:  
[www.burtzblock.com](http://www.burtzblock.com)*

*Thank you'*

ALL/ED CLASSIC INC.  
503 COURTS/DE DRIVE, NAPLES, FL 34105